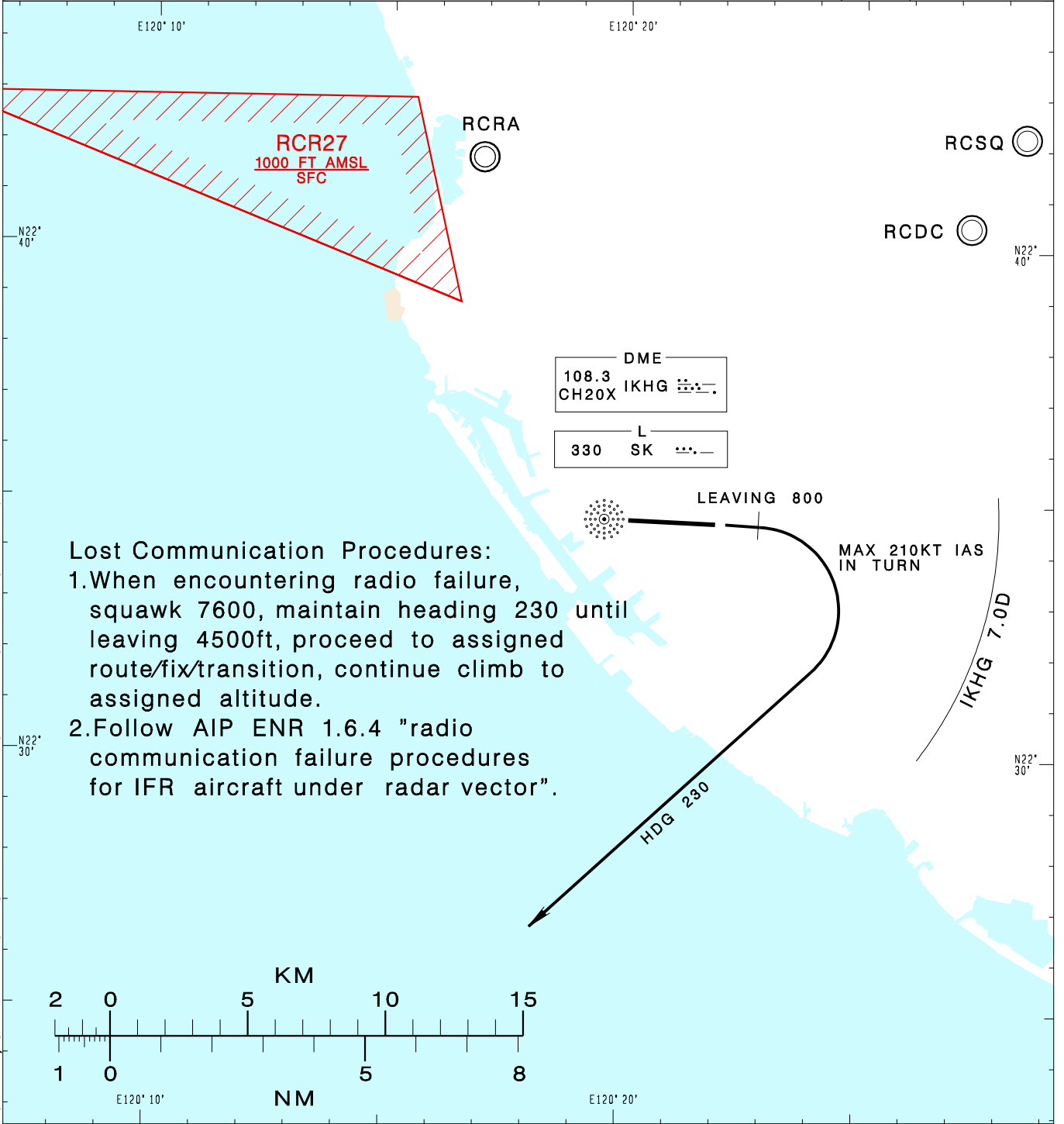


KAOHSIUNG APP 124.7 125.7	KAOHSIUNG TWR 118.7 120.7	ATIS 127.8	VAR 4° W MSA SK 25NM	
Apt Elev: 32'		Trans Level: FL130		Trans Alt: 11,000'
BEARINGS ARE MAGNETIC; DISTANCES ARE NAUTICAL MILES; ELEVATIONS, HEIGHTS IN FEET				



CHANGES: NEW PAGE NUMBER, UPDATE RESTRICTED AREA VERTICAL LIMITS REPRESENTATION

SPRAY ONE LIMA RADAR DEPARTURE
 Climb on RWY HDG until leaving 800ft, then turn right HDG 230, complete the turn within 7.0D from IKHG, climb to ATC assigned altitude for radar vectoring.

NOTE
 1. Minimum climb gradient required: 6% (365ft/NM) until 2,000ft.
 2. Caution: pier cranes, terrain and stacks east, west and south of the airport.
 3. ATS surveillance required.